

FN220-150-99-C2222-R99

SAP Code: 822428

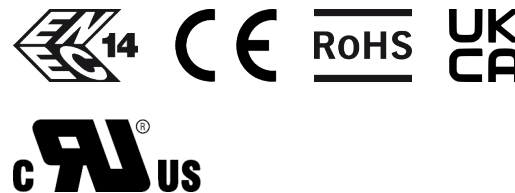


- Chassis mount
- 150 A EMC filter with bus bars
- DC

Buy article now



Approvals & Compliances



Features and Benefits

- FN222X, FN223X and FN224X series of filters provides state-of-the-art EMI attenuation with a choice of three performance levels
- The filters are built to fit perfectly to high power EV charging applications
- The shape allows a convenient and space-saving installation
- Fulfills the requirements in IEC/EN 61851-23 Electric vehicle conductive charging system
- Fulfills the requirements in UL 2202 Electric Vehicle (EV) Charging System Equipment
- FN224X offers voltage and performance ratings of FN222X on a smaller footprint

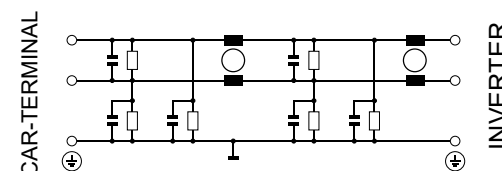
Family Technical Specifications

Maximum continuous operating voltage	500 VDC (FN223X) 1000 VDC (FN222X, FN224X)
High potential test voltage	P -> E 4800 VDC for 2 sec P -> P 3600 VDC for 2 sec
Rated currents	150
Overvoltage category	-40°C to +100°C
Pollution degree	40/100/21 acc. to IEC 60068-1
Surge withstand	IP 00
Temperature range (operation and storage)	UL 94V-0
Climatic category	UL 1283, CSA 22.2 No. 8 1986, IEC/EN 60939, EN 60721-3, EN 62109
Cooling	4x rated current at switch on, max. 8 sec 1.5x rated current for 1 minute, once per hour
Altitude	> 200,000 hours
Protection category	Ni plated cu bars/Metal
MTBF (Mil-HB-217F)	>300,000 h @ 50°C/500V

Typical Applications

- High Power EV DC charging beyond HPC350 (500 A @ 920 V)
- Two voltage levels (500 VDC and 1000 VDC) for CHAdeMO and CCS

Typical electrical schematic



General Specification

Voltage AC	1000 (Volt)
Nominal Frequency	DC
Rated Current @ambient	150 (Hertz)
Ambient temperature [°C]	55 (Celsius)

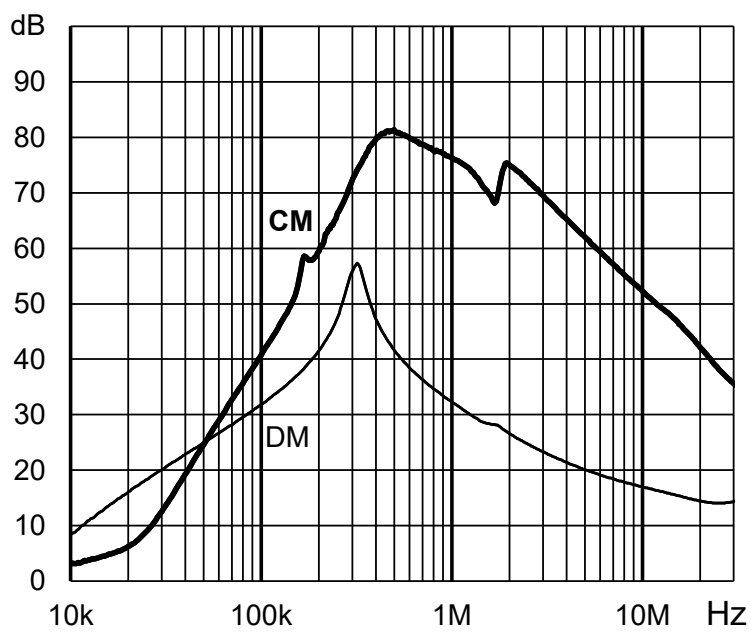
Electric Specification

Input terminal	99 - special / busbar
Output terminal	99 - special / busbar
Resistance	10 (Kilohm)

Attenuation Specification

CM attenuation @ 150kHz [dB]	51 (Decibels)
DM attenuation @ 150kHz [dB]	36 (Decibels)
Capacitance Cy1 [nF]	330 (Nanofarad)
Capacitance Cy2 [nF]	330 (Nanofarad)

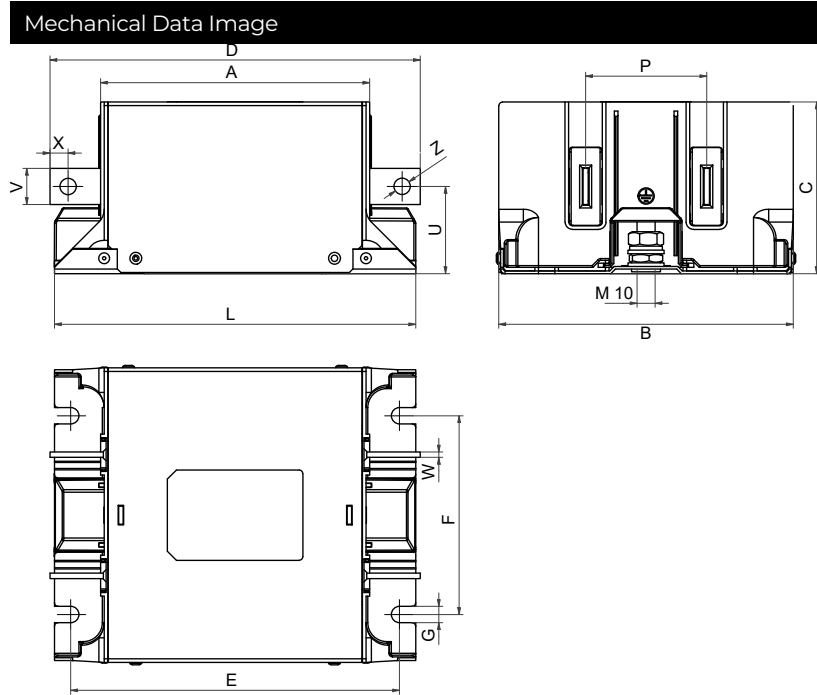
Attenuation graph



Mechanic Specification

Length [mm]	150 (Millimeter)
Width [mm]	163 (Millimeter)
Height [mm]	95 (Millimeter)
Volume [cm ³]	2323 (Cubic Centimeter)
NetWeight [g]	2690 (Gram)

Schaffner schemes



Dimensions

A [mm]	145
B [mm]	163
C [mm]	95
D [mm]	205
E [mm]	182
F [mm]	110
G [mm]	9
L [mm]	200
P [mm]	67
U [mm]	48
V [mm]	20
W [mm]	3
X [mm]	12.5
Z [mm]	9